



IMMIGRATION LAW REPORT

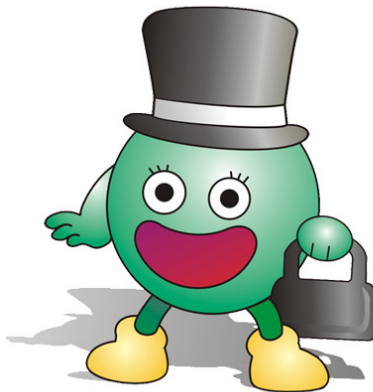
VOLUME ONE NUMBER FOUR

November 2004



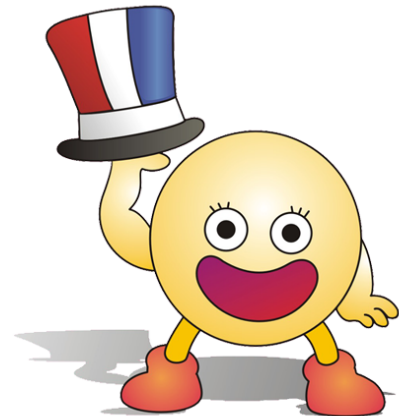
Immi, Jr.

Immi, Jr. will address nonimmigrant issues.



Immi

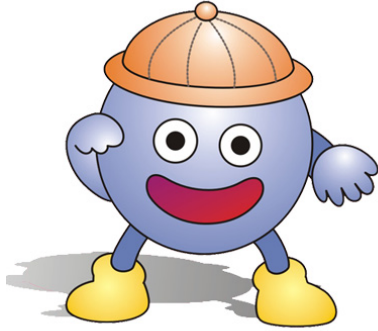
Immi will address immigrant issues.



Citizen Immi

Citizen Immi will address citizenship issues.

IMMEDIATE INFORMATIONAL RELEASES:



Immi, Jr. says: There is now an 18-MONTH Extension of Temporary Protected Status (TPS) For Nationals of Honduras and Nicaragua.

PLEASE READ THE INFORMATION BELOW.

THE EXTENSION OF TPS FOR NATIONALS OF HONDURAS AND NICARAGUA IS NOW EFFECTIVE

SOURCE: AMERICAN IMMIGRATION LAWYERS ASSOCIATION (AILA)

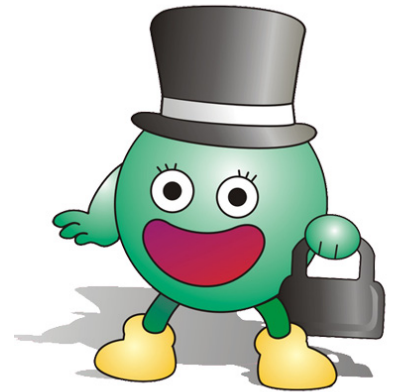
The Department of Homeland Security (DHS) and U.S. Citizenship and Immigration Services (USCIS) announced an 18-month extension of Temporary Protected Status (TPS) for nationals of Honduras and Nicaragua until July 5, 2006. Under this extension, those who have already been granted TPS are eligible to live and work in the United States for an additional 18 months and continue to maintain their status. There are approximately 81,875 nationals of Honduras and 4,309 nationals of Nicaragua (or aliens having no nationality who last habitually resided in Honduras or Nicaragua) who are eligible for re-registration.

The extension of TPS for nationals of Honduras and Nicaragua is effective January 5, 2005, and will remain in effect until July 5, 2006. Nationals of Honduras and Nicaragua who have been granted TPS must re-register for the 18-month extension during the 60-day re-registration period, which begins on November 3, 2004 and remain in effect until January 3, 2005. In an effort to prevent potential gaps in employment authorization while eligible Hondurans and Nicaraguans wait for their TPS re-registration applications to be processed, DHS is granting a six-month automatic extension of the expiration date of their current TPS-related EADs to July 5, 2005.

Section 244 of the Immigration and Nationality Act authorizes the Secretary of Homeland Security to grant TPS to aliens in the United States who are nationals of countries that are subject to ongoing armed conflict, environmental disaster, or other extraordinary and temporary conditions. On January 5, 1999, the Attorney General (who retained authority over TPS designations prior to the creation of the Department of

Homeland Security on March 1, 2003) designated TPS for Honduras and Nicaragua based on the devastation resulting from Hurricane Mitch and subsequently extended the designation four times. The most recent extension expires on January 5, 2005. Due to continued reconstruction of infrastructure damaged by Hurricane Mitch, the U.S. Government has determined that an 18-month extension of the TPS designation is warranted because Honduras and Nicaragua remain unable, temporarily, to handle adequately the return of its nationals.

Immi says: There is a new initiative to facilitate business travel in support of U.S. commerce abroad.



SUMMARY OF DEPARTMENT OF STATE'S CABLE ON NEW INITIATIVE TO FACILITATE BUSINESS TRAVEL

SOURCE: AMERICAN IMMIGRATION LAWYERS ASSOCIATION (AILA)

Many U.S. companies have sought assistance with respect to helping their ability to compete in the international marketplace. A key aspect of the effort involves continued close contact by visa processing posts with U.S. business interests in order to ensure that visa applications by legitimate foreign business travelers, especially those involved in trade, negotiations and other dealings with U.S. companies, receive full and timely attention.

The productive relationships that many posts already enjoy with local American Chambers of Commerce and similar organizations will serve as an important element in this initiative. Some new initiatives at posts include:

--Embassy Seoul's Business Referral Program, which provides expedited processing for employees of registered companies. Each company designates persons authorized to sign referral letters, which includes a registration stamp and serial number unique to the company.

--Bogota's program providing expedited appointments on Fridays for employees of companies that have been vetted by the Embassy.

--AIT Taipei's AmCham referral program, which allows for interview without appointment any morning between 8 and 11.

--Beijing's Business Visa Program, with over 400 participating companies. Applicants from those companies can apply without appointments any morning between 10 and 12, once the AmCham has notified the Embassy of the applicant's intention to apply.

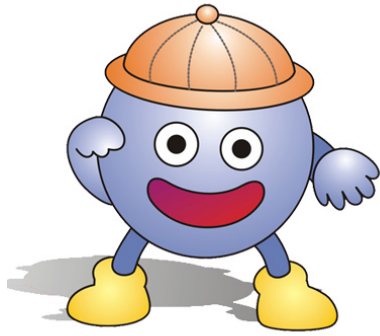
--Buenos Aires scheduling of blocks of appointments for AmCham affiliated companies. The AmCham ensures the visa application is arranged in a standard format, provides a job letter showing the applicant's position, salary, and length of service with the member company, and provides remote data entry service for the Embassy by e-mailing applicant data to the Embassy Call Center.

--London's special appointment program for persons in petition-related categories (O, P, H, L, etc.) who need to travel quickly.

--Chennai's Business Executive Program, which enrolls about 220 companies with a demonstrated need for a high volume of visas (100+ annually). BEP applicants have separate lines for screening and interviews.

--Tokyo's business outreach program, which allows companies who plan to send over 15 employees to the US to schedule special group appointments. The Embassy has conducted a strong outreach campaign to inform companies of the group appointment process.

In developing a business facilitation plan, posts are encouraged to draw on the above listed examples and to consult with local American Chambers and similar organizations. Posts should also work closely with any post Foreign Commercial Service (FCS) offices, and with State officers responsible for economic/commercial work. The Department of State realizes that business conditions and interests vary widely from post to post. Therefore, rather than develop a one-size-fits-all plan, the Department of State is asking posts to use knowledge of local needs and patterns of travel to come up with a plan that best fits both the needs of the business community and the requirements of the post.



Immi says: There is a new initiative to facilitate nonimmigrant travel.

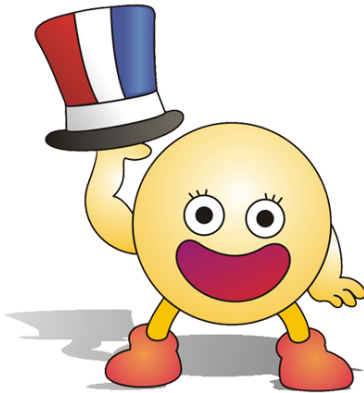
SUMMARY OF DEPARTMENT OF STATE'S CABLE ON NON-IMMIGRANT TRAVEL INITIATIVE

SOURCE: AMERICAN IMMIGRATION LAWYERS ASSOCIATION (AILA)

Each consular post is asked to undertake a detailed self-assessment of processes and procedures - using recent Department of State guidance and innovative success stories from the region as a directional resource - in order to help better manage the visa process.

In addition to reporting on a post's own efforts, consular posts are asked to provide any suggestions on additional measures that would improve the process. The Department of State is working with other interested agencies and private sector stakeholders to explore better ways to communicate with the business community, possibly including a secure website that could be used to verify business travel or company employment. A dedicated email address and other mechanisms for use in communicating with medical institutions on cases of interest may be established.

This initiative recognizes that while consular posts have done an excellent job in strengthening the visa process and ensuring border security, the United States must continue to attract and welcome qualified tourists, students, patients, scientists, and business people to the United States.



**DHS IDENTIFIES LAND PORTS OF
ENTRY FOR US VISIT PARTICIPATION**
SOURCE: AMERICAN IMMIGRATION LAWYERS
ASSOCIATION (AILA)

The Department of Homeland Security (Department or DHS) has established the United States Visitor and Immigrant Status Indicator Technology Program (US-VISIT), an integrated, automated entry-exit system that records the arrival and departure of aliens; verifies aliens' identities; and authenticates aliens' travel documents through comparison of biometric identifiers.

The 50 Land Border Ports of Entry (POEs) that will begin biometric data collection as part of US-VISIT processing no later than December 31, 2004 are as follows:

Port Huron POE, Blue Water Bridge, Highway 69 and International Border, Port Huron, Michigan

Douglas POE, Rte 191 and International Border, Douglas, AZ

Lincoln-Juarez Bridge POE, Laredo, TX

Gateway to the Americas International Bridge POE, Laredo, TX

Columbia Solidarity Bridge POE, Laredo, TX

World Trade Bridge POE, Laredo, TX

Niagara Falls POE (to include Lewiston-Queenstown, Whirlpool, and Rainbow Bridges), Niagara Falls, NY

Peace Bridge POE, Moore Drive and International Border, Buffalo, NY

Detroit Ambassador Bridge POE, Detroit, MI

Detroit-Windsor Tunnel POE, Detroit, MI

Lukeville POE, Highway 85 & International Border, Lukeville, AZ

Nogales East (Deconcini POE), Nogales, AZ

Nogales West (Mariposa POE), Nogales, AZ

San Luis POE, Highway 95 & International Border, San Luis, AZ

Andrade POE, Andrade, CA

Calexico East-Imperial Valley POE, Rte 111 and International Border, Calexico, CA

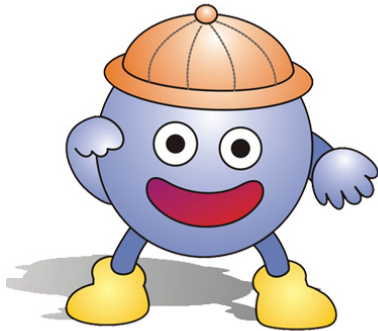
Calexico West POE, Rte 111 and International Border, Calexico, CA

Fabens POE 18051, Island Guadalupe, Fabens, TX

Presidio POE, Border Station Highway 67, Presidio, TX 79845 Santa Teresa POE, Santa Teresa, NM

Otay Mesa POE, 9777 Via De La Amistad, San Diego, CA
San Ysidro POE, Highway 5 and International Border, San Diego, CA
Tecate POE, Hwy 188 and International Border, Tecate, CA
Blaine-Pacific Highway POE, Rte. 543 and International Border, Blaine, WA
Blaine-Peace Arch POE, Interstate 5 and International Border, Blaine, WA
Lynden POE, Rte. 539 and International Border, Lynden, WA
Point Roberts POE, Tyee Drive and Roosevelt Way, Point Roberts, WA
Sumas POE, Cherry Street and International Avenue, Sumas, WA
Estimated start date of December 20, 2004 (10):
Champlain POE, Highway 87 and International Border, Champlain, NY
Massena POE, Rte. 45 and International Border, Rooseveltown, NY
Thousand Islands POE, Highway 81 and International Border, Alexandria Bay, NY
Sault Ste. Marie POE, The International Bridge, Highway 75 and International Border, Sault Ste. Marie, MI
Bridge of the Americas POE, El Paso, TX
Paso del Norte Bridge POE, El Paso, TX
Ysleta POE, Ysleta-Zaragoza Bridge, El Paso, TX
Derby Line POE, Highway 91 and International Border, Derby Line, VT
Calais--Ferry Point POE, Main Street and International Border, Calais, ME
International Falls POE, Rte 53 and International Border, International Falls, MN
Gateway International Bridge POE, Brownsville, TX
Brownsville/Matamoros Bridge POE, Brownsville, TX
Hidalgo POE, McAllen-Hidalgo-Reynosa International Bridge, McAllen, TX
Los Indios POE, Free Trade Bridge at Los Indios, Los Indios, TX
Los Tomates/Veterans International Bridge POE, Brownsville, TX
Pharr POE, Pharr-Reynosa International Bridge, Pharr, TX
Progreso POE, Progreso/Nuevo Progreso International Bridge, Progreso, TX
Rio Grande City POE, Starr-Camargo Bridge, Rio Grande City, TX
Roma POE, Roma-Ciudad Miguel Alem[acute]n Bridge, Highway 83 and International Border, Roma, TX
Del Rio POE, Del Rio/Cuidad Acuna International Bridge, Garfield Avenue and International Border, Del Rio, TX
Eagle Pass Bridge I POE, Eagle Pass/Piedras Negras Bridge, Highway 57 and International Border, Eagle Pass, TX
Eagle Pass Bridge II POE, Camino Real International Bridge, Highway 57 and International Border, Eagle Pass, TX

QUICK INFORMATIONAL BYTES:

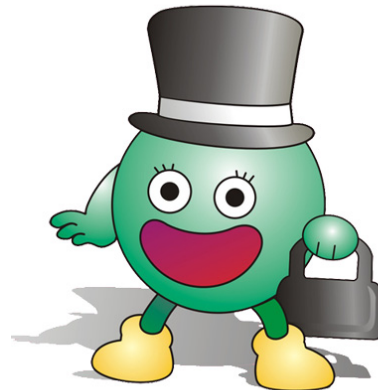


Immi, Jr. says: Students interested in traveling over Christmas break should bring with them updated school registration materials, the upcoming semester's list of classes, copy of apartment lease, etc.

SOURCE: TERRENCE L. OLSEN, ESQ., OLSEN LAW FIRM

Immi says: Remember, green cards must be renewed every ten years!

SOURCE: TERRENCE L. OLSEN, ESQ., OLSEN LAW FIRM



Citizen Immi says: Please beware that rescheduling interviews is very difficult! Don't miss an interview unless there is no other option.

SOURCE: TERRENCE L. OLSEN, ESQ., OLSEN LAW FIRM

QUESTIONS AND ANSWERS:

Explanation: If you have questions concerning immigration related issues or concerns and are of a non-advice and pure general interest nature, please e-mail them to tolsen@tlolaw.com.

IMPORTANT IMMIGRATION RELATED WEB SITES:

<http://uscis.gov/graphics/index.htm>

- US Citizenship and Immigration Services Web Link

<http://www.dol.gov/>

- Dept. of Labor Web Link

<http://www.state.gov/>

- Dept. of State Web Link

<http://www.embassy.org/>

- Embassies in Washington D.C. Web Link

<http://www.aviso.net/government/embassies/>

- Embassies Located Inside and Outside U.S. Web Link

CONTACT INFO:

Please visit: www.tlolaw.com for our web site

Terry Olsen, Attorney, tolsen@tlolaw.com , 423-648-9390 and 423-648-9370 (for Chinese and Taiwanese language assistance)

Disclaimer

OLSEN LAW FIRM provides the information on these pages as a public service, free of charge. Information contained on these pages is not intended as, and should not be taken as, legal advice. The use of information provided on these pages should not be taken as establishing any contractual or other form of attorney-client relationship between OLSEN LAW FIRM and the reader or user of this information.

While we would like to hear from you, please understand that merely contacting us does not create an attorney-client relationship between us. We cannot represent you or become your lawyers in any way unless (1) we know that doing so would not create conflict of interest with any of the clients we currently represent or have represented in the past and (2) satisfactory arrangements have been made between us for our representation.

While we have provided links to other World Wide Web sites, we cannot be and are not responsible for the contents of these other sites. We expressly disclaim any liability with respect to actions taken or actions not taken based on content received from a third-party web site linked, directly or indirectly, to the OLSEN LAW FIRM web site.

The link to another site is not to be construed in any way as an endorsement of the host, the site, or the information contained therein, nor is such link to be inferred as an association or affiliation with the host.

Listing of related or included practice areas herein by individual attorneys or by OLSEN LAW FIRM does not constitute or imply a representation of Certification of Specialization.

Immi, Jr., Immi, and Citizen Immi © 2002 by Terrence L. Olsen.