



# OLSEN LAW FIRM IMMIGRATION NEWSLETTER

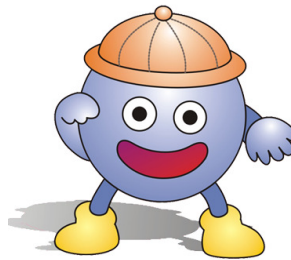
NOVEMBER 2005

VOLUME 11

## In this issue:

USCIS Refuses to Release the unused H-1B	2
DOL Confirmed the No Policy of Withdrawing Pending Labor Cert	2
New Fee Activated on 10/26.	3
Policy of Sending Checks	3
New Procedure of Scheduling Biometry Appointment	4
TSA Releases "Watch List"	4
Quick Information Bytes	5

We welcome you to meet the Immis! They help us simplify the immigration process for you. The Immis are in every issue of our newsletter and act as your personal guides to various immigration topics.



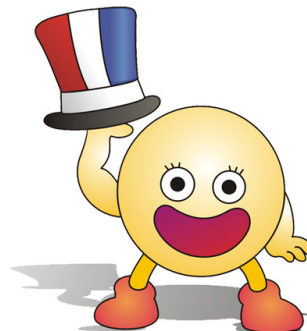
**Immi Jr.**

*Immi Jr. will address nonimmigrant issues*



**Immi**

*Immi will address immigrant issues*



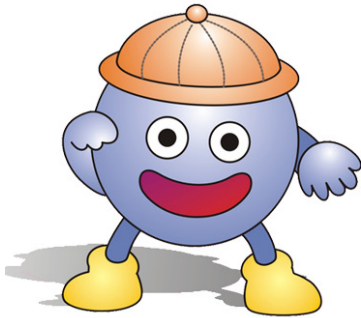
**Citizen Immi**

*Immi will address citizenship issues*

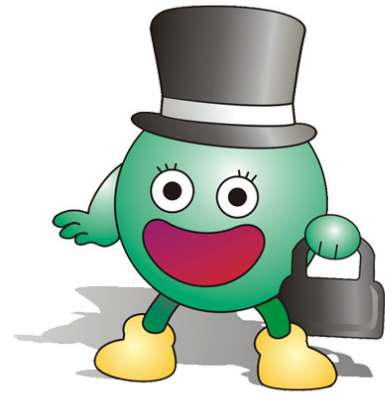
## USEFUL INFORMATION:

- Immigration Related Web Sites 6
- Olsen Law Firm Contact Information 7

## IMMEDIATE INFORMATIONAL RELEASES



*Immis say: Oh..No!!!  
USCIS refuses to  
recapture unused H-1B  
numbers.*

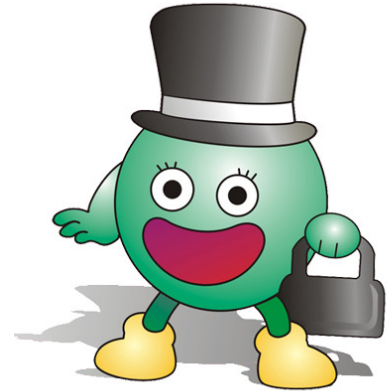


### **USCIS REFUSES TO RECAPTURE FISCAL 2005 CHILE/SINGAPORE H-1B NUMBERS**

**SOURCE: AMERICAN IMMIGRATION LAWYERS ASSOCIATION (AILA)**

USCIS responds to a letter from Senators on the Immigration Subcommittee, refusing to follow their request to add unused fiscal 2005 Chile and Singapore H-1B1 numbers back into the H-1B pool.

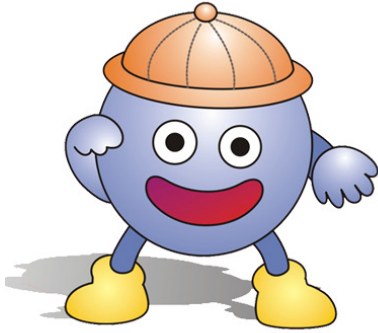
*Immi says: You need to be aware that your  
approved PERM Certification will not affect  
your pending Labor Cert at a Backlog Center.*



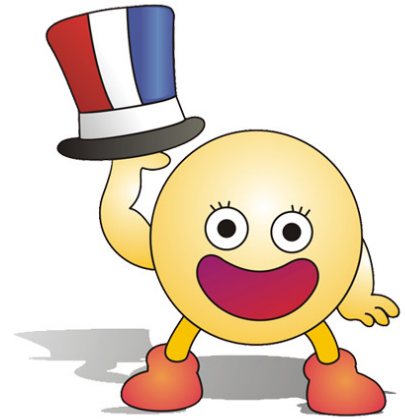
### **DOL CONFIRMS IT HAS NO POLICY REQUIRING WITHDRAWAL OF PENDING RIR ON FILING OF PERM**

**SOURCE: AMERICAN IMMIGRATION LAWYERS ASSOCIATION (AILA)**

The U.S. Department of Labor (“DOL”) has confirmed that it has no policy at the current time to withdraw a pending case at a Backlog Elimination Center when a certification is issued under PERM for the same beneficiary.



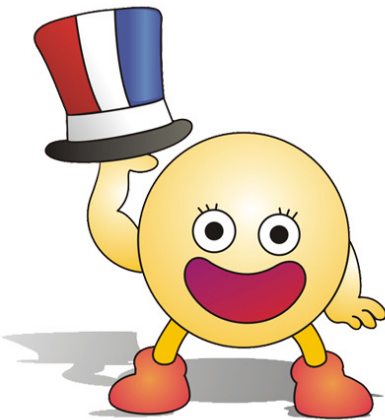
***Immis say: Remember!!!  
The new filing fees are  
activated this Oct. 26th.***



## **CIS CONFIRMS POSTMARK DATE OF OCTOBER 25 CONTROLS FOR OLD FEE STRUCTURE**

**SOURCE: AMERICAN IMMIGRATION LAWYERS ASSOCIATION (AILA)**

USCIS Service Center Operations has confirmed that it has instructed the service centers that all filings POSTMARKED Tuesday, October 25th will be processed under the old fee structure. All filings postmarked after this date will be subject to the new fee structure.

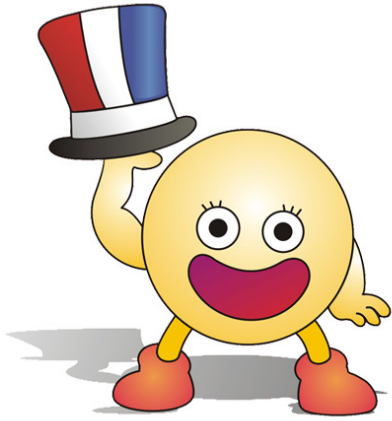


***Citizen Immi says: Ha!! Make sure your  
checks to CIS are no older than 6 months!!!***

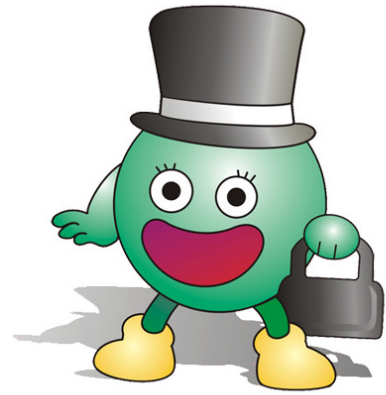
## **USCIS ADVISES ON POLICY REGARDING AGE OF ACCEPTABLE CHECKS**

**SOURCE: AMERICAN IMMIGRATION LAWYERS ASSOCIATION (AILA)**

USCIS Service Center Operations has advised that, effective immediately, USCIS will only accept personal and business checks that are no older than 6 months. Historically, Service Centers had differing policies regarding the age of acceptable checks. In an effort to achieve consistency at each Service Center, USCIS has adopted the 6 month standard.



*Immis say: Watch out!!!  
USCIS has a new procedure  
to schedule your biometric  
appointment.*

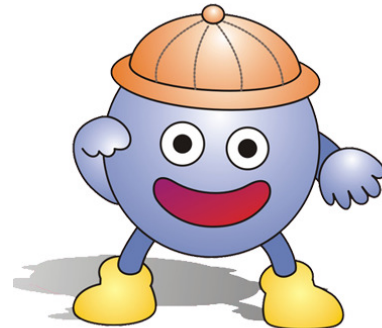


## **USCIS DISCONTINUING USE OF 800 NUMBER FOR BIOMETRIC SCHEDULING**

**SOURCE: AMERICAN IMMIGRATION LAWYERS ASSOCIATION (AILA)**

Effective immediately, the use of the 800 number to schedule biometric appointments has been discontinued. CIS is updating its website to provide clear instructions as to the proper procedure for scheduling biometric appointments. CIS expects the update to be completed in the next several weeks.

*Immi Jr. says: Oh...!!! Remember  
whatever you do and wherever you go, you  
could be on a watch list.*



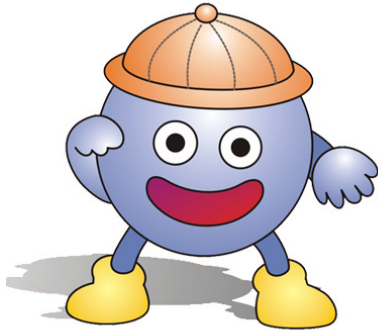
## **TSA RELEASES FORM TO DISTINGUISH TRAVELERS' NAMES FROM WATCH LISTS**

**SOURCE: AMERICAN IMMIGRATION LAWYERS ASSOCIATION (AILA)**

The Transportation Security Administration (TSA) has recently made available on its website procedures by which an individual may distinguish his or her name from a similar name on a Watch List. The Passenger Identity Verification Form (PIVF) is available at [http://www.tsa.gov/interweb/assetlibrary/PIV\\_Form.pdf](http://www.tsa.gov/interweb/assetlibrary/PIV_Form.pdf). Previously, individuals were required to contact TSA or the Ombudsman's office to obtain the clearance form.

An explanation of TSA's clearance procedures also is available on its website at [http://www.tsa.gov/public/interapp/editorial/editorial\\_1829.xml](http://www.tsa.gov/public/interapp/editorial/editorial_1829.xml). Please note that the clearance procedures apply only to persons affected by the Watch Lists and minor children. Submission of the PIVF does not actually remove a name from the Watch Lists. Instead this process places the names and identifying information of individuals in a cleared portion of the Watch Lists. The information also is transmitted to the airlines.

## QUICK INFORMATION BYTES

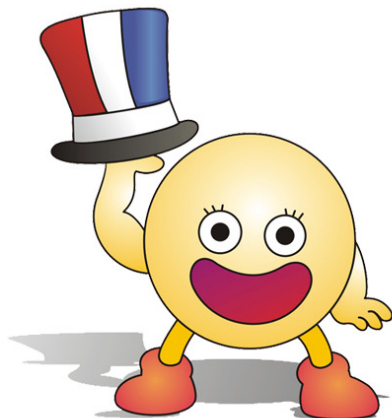
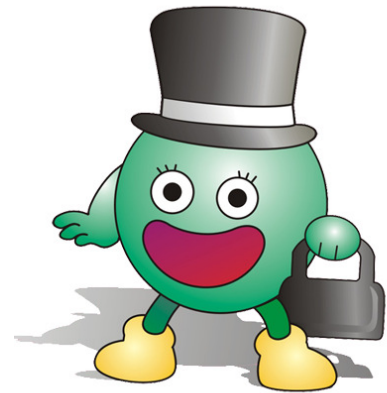


***Immi, Jr. says: It may be helpful to keep copies of your SEVIS I-20 and I-94 card in your car, your wallet and/or your purse.***

SOURCE: TERRENCE L. OLSEN, ESQ., OLSEN LAW FIRM

***Immi says: Before you apply for permanent residence, please be aware of the Visa Bulletin's Priority Dates.***

SOURCE: TERRENCE L. OLSEN, ESQ., OLSEN LAW FIRM



***Citizen Immi says: It may be helpful to keep an active list or log of all dates and places of where you have been out of the U.S. for the last 5 years.***

SOURCE: TERRENCE L. OLSEN, ESQ., OLSEN LAW FIRM

# QUESTIONS AND ANSWERS

**Explanation:** If you have questions concerning immigration related issues or concerns and are of a non-advice and pure general interest nature, please e-mail them to [tolsen@tlo.com](mailto:tolsen@tlo.com).

## IMPORTANT IMMIGRATION RELATED WEB SITES

<http://uscis.gov/graphics/index.htm>

- US Citizenship and Immigration Services Web Link

<http://www.dol.gov/>

- Dept. of Labor Web Link

<http://www.state.gov/>

- Dept. of State Web Link

<http://www.embassy.org/>

- Embassies in Washington D.C. Web Link

<http://www.aviso.net/government/embassies/>

- Embassies Located Inside and Outside U.S. Web Link

## CONTACT INFORMATION

Please visit: [www.tlolaw.com](http://www.tlolaw.com) for our web site

**Terry Olsen, Attorney, [tolsen@tlolaw.com](mailto:tolsen@tlolaw.com), 423-648-9390 and 423-648-9370 (for Chinese and Taiwanese language assistance)**

### **Disclaimer**

OLSEN LAW FIRM provides the information on these pages as a public service, free of charge. Information contained on these pages is not intended as, and should not be taken as, legal advice. The use of information provided on these pages should not be taken as establishing any contractual or other form of attorney-client relationship between OLSEN LAW FIRM and the reader or user of this information.

While we would like to hear from you, please understand that merely contacting us does not create an attorney-client relationship between us. We cannot represent you or become your lawyers in any way unless (1) we know that doing so would not create conflict of interest with any of the clients we currently represent or have represented in the past and (2) satisfactory arrangements have been made between us for our representation.

While we have provided links to other World Wide Web sites, we cannot be and are not responsible for the contents of these other sites. We expressly disclaim any liability with respect to actions taken or actions not taken based on content received from a third-party web site linked, directly or indirectly, to the OLSEN LAW FIRM web site.

The link to another site is not to be construed in any way as an endorsement of the host, the site, or the information contained therein, nor is such link to be inferred as an association or affiliation with the host.

Listing of related or included practice areas herein by individual attorneys or by OLSEN LAW FIRM does not constitute or imply a representation of Certification of Specialization.

Immi, Jr., Immi, and Citizen Immi © 2002 by Terrence L. Olsen.